

Northern Potters Association



The Oakwood Gallery

Contemporary Ceramics and Applied Art

Inside This Issue

Exhibitions	3
Diary Dates	5
York Open Event	5
Sheila at West Dean	6
Exhibitions Information	7, 8, 9, 10
CPA Event	11
Featured Gallery	13
Events and Opportunities	14
Websites	15
Demonstrations and residencies	15

Issue April - May 2001

Editors Note

First of all thank you to everyone who sent in information and article for this issue. Again I have to apologise to those who did not make it into this issue as there was no more room and I had to prioritise what was included. If you didn't make it this time please be assured it will be in the next one. Please keep sending in your articles and information though or I will end up with not enough in the next issue.

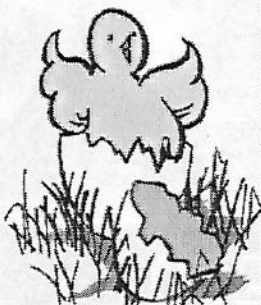
Unfortunately there is no profiled member this issue as the person I approached was taken ill and the one for the next issue is not ready yet. Nevertheless I think you'll find enough in this issue to keep you reading.

Due to the raging foot and mouth epidemic there is some uncertainty as to whether some ceramic events will take place. I have tried to check on as many events as possible and at the time of going to press all Potfest events are still on, Art in Clay at Hatfield House is still on as are all events organised by the Exhibition Team Ltd. Please support as many events as you can this year as the livelihood of all potters and event organisers is in jeopardy if these events are not supported, not to mention all the peripheral industries. Encourage as many friends as possible to go and buy. If we all do our bit then a greater number of small industries will survive this crisis.

I have had only ten responses as to whether you like the format of your newsletter. So I will take it that on the whole everyone is happy with it.

Good potting
and
good sales

Judith



Chat from the Chair

Well, Spring is finally just around the corner (we live in hope!) and your committee has been very busy. The Harris Exhibition resulted in gross sales of over £2,500 which is good for those members who submitted.

Our next exhibition is coming up at North Light Gallery at Huddersfield with submission at the end of April. We need lots of work for this large gallery, so get potting everyone please. Jim Robison has agreed to act as selector.

Also at the end of April we have our first Masterclass of the year in Harrogate with two very interesting and different demonstrators, Kyra Cane and John Higgins. This promises to be a popular event so please book early. Details elsewhere in this newsletter.

Finally I can now confirm that our next major Festival will take place at Bretton Hall near Wakefield on the weekend of 12th-14th July 2002. If members have ideas as to the demonstrators they would like, please get in touch with me ASAP. No promises of course, but we would like your ideas.

Looking forward to some warmer weather and faster drying clay!!!!.

Yours

Pete Clough

Important Announcement

Unfortunately the anagama firing set for 31st March at Rufford has now been postponed until further notice.

Rufford Park is temporarily closed due to concerns about access to farmland during the foot & mouth crisis.

Rufford are reviewing the situation on a weekly basis and will inform everyone who has registered to take part as and when it will be reopening it's gates. Let's hope it won't be long!

All the best
Penny Withers

Deadline for next issue Friday 25th May 2001

Word processed material is very welcome. My software is Microsoft Works 2000 - if in doubt about the format use Rich Text Format, or just Text. Please send a print out with posted discs. If emailing, pasting text into the message is surer than attaching a file. Printed out material is also very quick for me to scan in. Hand written contributions are very welcome too.

Thank You!

Exhibitions

LADY BAY OPEN STUDIO WEEKEND

19th & 20th MAY

12.00 noon - 6.00pm

FREE ADMISSION

Start points: 42 Seymour Rd or 23 Lady Bay Rd, Lady Bay, West Bridgford, Nottingham

For more information contact:

Fran Tristram

Lady Bay Pottery, 42 Seymour Rd, West Bridgford, Nottingham NG2 5EF

Tel 0115 9822681

email: frantristram@ntlworld.com

RAKU Exhibition

1st April to 20th May

Sculptural Vessel Forms by Mo Fulford, Captivating Animal Sculptures by Brian Hollingworth Exotic Lustre Bowls by John Scott.

COPPER REDS AND CELEDON Exhibition

26th May to 8th July

Pitchers, Jugs and Bowls in Stoneware and Porcelain by Eddie and Margaret Curtis Stokoe House Ceramics Gallery, Market Place, Alston, Cumbria. CA9 3HS Tel: 01434 382 137 open 10 am to 5 pm Daily.

Contemporary Ceramics

19th to 28th April Michael Casson

10th to 19th May Penny Fowler

22nd May to 2nd June Tina Vlassopoulos

Craft Pottery Shop and Gallery

7 Marshall Street

London W1

EUROPEAN CERAMICS

presents "ASHRAF HANNA - Smoked Vessels" at the Mercer Art Gallery, Swan Road, Harrogate from Good Friday April 13th until Sunday June 3rd. You are invited to come along to the "Meet the Maker" event on Sunday May 5th at 15.00 Opening Hours Tuesday to Saturday 10.00 until 17.00 Sundays 14.00 until 17.00 Entry is free.

Painting with Smoke

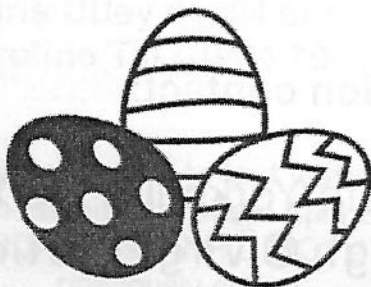
Raku Ceramics by David Roberts 17th March to 5th May 2001

Myles Meehan Gallery, Darlington Arts Centre.

For further information contact: Tickets and Information

Tel: 01325 486 555

'The Art of the Potter' Ceramics through the centuries, from fine dining to utilitarian ware. Royal Pump Room Museum, Harrogate. Runs until May Tel: 01423 556 188



5% DISCOUNT

to members of
**Northern Potters
Association**

Please quote membership number
when ordering



Ceramic materials and equipment
to meet all your requirements

Potterycrafts LTD

HEAD OFFICE

Campbell Road, Stoke-on-Trent ST4 4ET

Tel: 01782 745000 Fax: 01782 746000

sales@potterycrafts.co.uk

<http://www.potterycrafts.co.uk>

LONDON NORTH

Kings Yard Pottery, Talbot Road

Rickmansworth, Herts WD3 1HW

Tel: 01923 770127

Fax: 01923 896202

LONDON CENTRAL

8-10 Ingate Place

Battersea, London SW8 3NS

Tel: 020 7720 0050

Fax: 020 7627 8290

GHS CERAMICS LIMITED

Morley Leeds

We are a northern based supplier of ceramic materials and products, operating from premises situated within 1 mile of the M62, junction 28.

Within our expanding range of items ready for immediate collection, or early dispatch are:

- Clays from the main producers in Stoke on Trent
- Glazes, colours, frits, oxides, raw materials
- Kiln furniture and refractories including insulation bricks, ceramic fibre products, castables
- A wide selection of quality tools
- Kilns and Potters wheels at competitive prices

NORTHERN AGENTS FOR POTCLAYS

Please telephone or fax to receive our current price list or alternatively call into our Sales Office.

HOURS: Monday - Thursday 8.00 - 4.30

Friday 8.00 - 4.00

Tel: 0113 252 7144 Fax: 0113 253 1527

Units 9-10, Tingley Bar Ind. Est.
Morley, Leeds. LS27 0HE



NORTHERN POTTERS ASSOCIATION

INVITE YOU TO A

A ONE DAY MASTERCLASS

Harrogate College of Art and Technology

28th April 2001

10.00 am to 4.00 pm



Kyra Kane

Kyra makes a variety of wheel thrown forms in one or two parts, firing to 1285 C in light reduction. The interplay of form and surface are an important element in her work, and she

applies layers of oxide, stain and glaze until the surface is animated by a series of marks, both textured and coloured with references to her observations of landscape.

John Higgins



Johns work refers most often to architecture, archaeology and everyday objects. Slab and thrown elements are used in construction that evolve as they are made. Surfaces are

treated simply with slips, stains and oxides, often multifired in both gas and electric kilns. John always makes pots but the results continually question and criticise our perception of pottery.

Prices:	Non members	£14.00
	Members:	£12.00
	Students: (with student card)	£ 9.00

To Book or for further information contact:

Pete Clough 8 Southville Terrace Harrogate Yorkshire HG1 3HH
Tel: 01423 567 716 Email: pot.clough@virginnet.co.uk

YORK OPEN AIR ART EXHIBITION 2001

The City of York council is once again putting on the art and ceramics exhibition in the centre of Parliament Street.

SATURDAY 30th JUNE - SUNDAY 1st JULY
You can take part in either of these days.

the event is free.

10% of your sales are given to the Lord Mayor's charity fund.

a table and chair are provided.

These are put in position by city centre staff, you are not involved in erecting or dismantling them.

you can bring a wheel if you'd like to demonstrate. Any other ideas welcome. If you would like to, please contact Caroline or myself to talk it through.

DO NOT arrive with a wheel if you have not spoken to us first.

If you would like to take part, please send a large stamped addressed envelope to:

**Chris Utley,
West Wood House,
Main Street,
Sutton upon Derwent,
York
YO41 4BT.**

The forms have to be returned by 14th May.

**Chris Utley 01904 608409
Caroline Till 01904 794171**

Amendment to last issue

Please note the date of the April Event is SATURDAY 28th APRIL NOT 27th as previously stated

Second hand books and magazines bought and sold.
Phone for wide ranging ceramic book list.

Magazines available include:

Ceramic Review
Ceramic Art & Perception
Ceramic Technical
Ceramics Monthly
Crafts
Craft Art International
Art Review
Artists Newsletter
Ceramics in Society

Free post and packing.
Kelsick Rd Ambleside Cumbria LA22 0B2
Tel:01539434045

10% Discount for NPA Members collecting from gallery or Potfest

Dexterity

Dexterity

Diary Dates

Earth & Fire VII

23rd & 24th June

Rufford Country Park, Notts.

(Please note that the park is at present closed due to Foot and Mouth and therefore there is a question mark as to whether this event will take place)

International Ceramics Festival

Aberystwyth

Fri 29th, Sat 30th June & Sun 1st July 2001

For list of Artists see last newsletter

Cost: £68 for NWP/SWP members,

£78 non-members,

£50 students and children in full-time education over 14 years old,

Free to accompanying children under 14 years old.

Camping Adults £4, Children £3 per person per night. For Application

Forms contact:

Aberystwyth Arts Centre, Aberystwyth, Ceredigion SY23 2DE

Tel: 01970 623 232

Website: internationalceramicsfestival.co.uk

25th Art in Action

19th to 22nd July

Waterperry Gardens,

Wheatley, Oxford

7th National Pottery & Ceramics Festival

3/4/5 August

Hatfield House,

Hertfordshire

Cumbria Ceramica

Potfest in the Park

July 27 / 28 / 29th

Potfest in the Pens

August 3 / 4 / 5th

Plus a whole load of events going on in between

For details of Potfest 2001 check out the website:-

<http://www.potfest.co.uk>

Chelsea Crafts Fair

16th-21st and 23rd-28th October



YET ANOTHER WEEKEND AT WEST DEAN

Undaunted by last Decembers disappointing Ceramics Master Class at West Dean College I enrolled for this years master class on Tin Glazed Earthenware with Daphne Carnegie.

Daphne Carnegie's degree was in French and so it was no surprise that she came to find herself in France where she became apprenticed to a faience potter. On her return to England she trained at Harrow and set up a workshop in London producing painted tin-glazed earthenware in the majolica tradition. She is a fellow of the CPA and author of *Tin-Glazed Earthenware*—now sadly out of print.

Having ascertained on the first evening that no circle dancing or meditation was involved I settled down to enjoy a weekend of talking to potters, potting and having good food presented to me with no need to shop and cook.

I have for a long time enjoyed looking at Daphne Carnegie's work, and I have an affection for majolica which dates back to my student days. Indeed somewhere in the jumble of my workshop I have some tin glaze and colours waiting to be used.

Friday evening after dinner ten of us and Daphne met in the Housemaids Sitting Room, where we began the weekend with an introductory lecture on the history of tin-glazed earthenware.

Saturday we presented ourselves in the pottery to start work. We had to bring with us at least six biscuited pieces on which to work, mine were small and simple forms since they had to endure a journey by car, train, bus and another train. The lucky locals brought huge platters and things with handles and spouts, mine looked very boring and plain by comparison. We also had to bring an assortment of brushes and a sketch book.

We started the weekends work by mark making with our brushes. It was refreshing to dab and flick and scribble and to be introduced to a brush called a coach liner which has a very long hair length (on my return I tracked one down—it does the most amazing things). Daphne then talked about glaze preparation and I was amazed by the thickness of the glaze. I use my glaze very thin and here the glaze coated the hand like a kid glove. We then glazed our pots so that the glaze would dry very thoroughly before we applied decoration. This was new to me, I had always glazed before the glaze became dry and powdery but sure enough this glaze developed a hard crust overnight which allowed handling without the glaze rubbing off easily. We were also supplied with a very comprehensive sheet of colour and glaze recipes. Daphne then decorated a large bowl to demonstrate her technique, we all watched with rapt attention.

We were supplied with six inch square biscuited tiles, as I have been trying to find a supplier of these I was pleased to

be told that they come from Ceramatech. Our first exercise was to decorate a tile using cobalt in three strengths so that we had washes, bolder strokes and finally lines drawn with deep colour.

We next had to decorate a set of four tiles still working in monochrome. We had a limited time and so had to attack the exercise with some degree of spontaneity. We finished the first days practical work by choosing and mixing our own colours from Daphne's recipes. In the evening we had another slide lecture and discussion on Daphne's own work and that of contemporary potters.

Next morning we were let loose with colours on our own pieces. The first pot was to be decorated using two colours and we were allowed fifteen minutes, again no time for messing about. We then used three colours and were allowed ten minutes, finally we used four colours in five minutes. By this time we had decorated pots with abandonment of five year old children, this was of course the exercise. Finally we decorated the rest of our own pots with any number of colours in our own time. After each exercise we discussed our efforts and it was very interesting to see the progress we all made, we all began to work in a much more fluid manner.

We ranged in age and size from the very young, slender Japanese girl—could she really have come from the same country that produces Sumo wrestlers—to the well over sixties and well over twelve stone. One chap turned out to be a veterinary surgeon in real life, apart from some funny stories, he presented us with syringes, scalpels and showed us a very useful wire rope with toggles on the ends which is very efficient for cutting fire bricks. He uses for cutting off cows horns.

The Japanese girl and Australian lad were on a ceramics restoration course which West Dean runs, and we were very privileged to be shown around the laboratory by them. Pieces for restoration come in from various sources, museums, collectors and private clients.

The whole Group got on together very well, so much so that we are to meet in the Spring to have lunch and a discussion of our finished pieces.

This was a very well constructed course, Daphne planned the exercises with great precision and effect and she showed great generosity in sharing her knowledge and recipes. I learned a lot, and was inspired to pursue the technique. Incidentally Daphne Carnegie's mother came from Huddersfield and her aunt lived in Hutton-le-Hole so there is not much wrong with her pedigree.

Sheila Spencer

EXHIBITIONS

SELECTED EXHIBITION AT NORTH LIGHT GALLERY—HUDDERSFIELD

DATES 5TH MAY TO 7TH JULY 2001

The Northern Light Gallery is an absolutely huge space (approx 7000 sq feet!) so we are looking for lots of work—20 pieces per member. It is a wonderfully light and airy space with lots of potential. There is a large café / reception area where NPA wall work will be shown along with 2 large enclosed cases, we feel that this will make a good introduction to the main gallery. The main gallery space will be shared with artist Anthony Green, whose work will be show on the walls.

Work will be removed at the time of sale and therefore a back-up stock will be reserved to replace pieces. We would like some brief biographical details enclosed with your submission forms.

All wall work should be mirror plated.

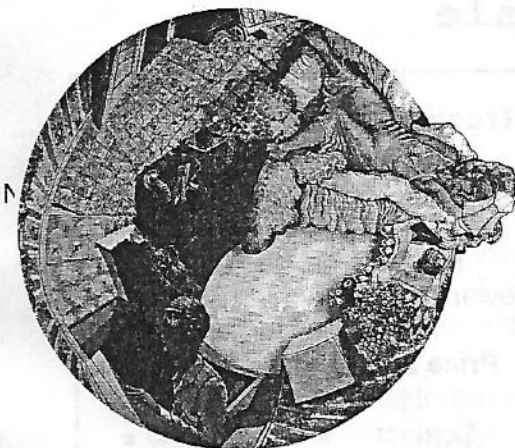
The gallery is happy to include one group work to be shown in this exhibition.

Some of the work submitted to Preston was not very adequately packed. (I.e. boxes overfilled so that the lids don't close—more boxes would be preferable). This makes things very difficult on selection day and could lead to pieces being damaged—please pack your work wisely!

It would be a real shame not to use this wonderful large space to it's full potential—so come on all you active potters, get your hands in clay and send us lots of work to display! - and sell!!!

WORKSHOPS FOR NORTHERN POTTERS AT NORTH LIGHT EXHIBITION

The gallery are interested in running workshops to coincide with this exhibition and are currently arranging publicity to measure response. If the response is good they will be looking for members to cover these, the payment will be £150 per day. If you are interested, please contact Alison or Julie—exhibitions (details on back page)



The exhibition that will run concurrently with the Northern Potters at North Light is by Anthony Green R.A.. The works will include large scale paintings on the walls of both galleries and six large painted sculptures. Anthony Green specialises in domestic scenes from his middle class life. Painting in oils with a loving attention to detail, often on oddly shaped canvases that accentuate his strange perspective effects which are often humorous. He has shown internationally in group exhibitions and his work is represented in public collection including the Tate Gallery.

ADDITIONAL INFORMATION TO SUBMISSION FORMS

“NORTHERN POTTERS AT NOTH LIGHT”

This information is to be read in conjunction with the submission form

NPA has arranged a selected selling exhibition at North Light Gallery, Huddersfield. Sold work will be removed at time of sale and replaced from reserves stored in stock.

Selection Procedure

- Entry** Each member of NPA may submit a **maximum of 20 items of work.**
- Delivery** To the gallery between Monday 23rd and Saturday 28th April from 10am to 5pm. Parking facilities available.
- Collection** Unselected work should be collected from the gallery at the preview. If you are unable to collect in person you must arrange for someone else to do so.
- Assistance** The committee may be able to help with the delivery or collection of work, but please ask early to avoid disappointment. Contact your nearest committee member for assistance (tel. No's. on back of the NPA Newsletter).
- Insurance** The gallery policy covers work on their premises subject to an excess of £250. NPA accepts no responsibility for any damage or loss in transit or at any other time and recommends members insure their own work.
- Unsold Work** Unsold work must be collected between Wednesday 11th and Saturday 14th July (see gallery opening times). Committee may be able to help as before. Failure to collect unselected or unsold work may incur storage charges. Work not collected after one month becomes the property of NPA and will be disposed of.

NORMAL GALLERY OPENING TIMES: Wednesday to Friday 11 am to 5 pm Saturday 11 am to 4 pm

Please Note:

- 1) Lots of wall space and enclosed cases are available as well as plinths, so there are no restrictions on type of work submitted.
- 2) All wall work **must** be mirror plated.
- 3) We would like brief biographical details enclosed with submission forms (preferably typed).

APOLOGY: The NPA and the Newsletter Editor wish to apologise to **North Light Gallery** for the misprint in last months newsletter which read “Northern Light Gallery” **SORRY!!!!**

Members Items for Sale

<p style="text-align: center;">Potterycrafts Super Mark V Electric Wheel Hand/Foot Control</p> <p style="text-align: center;">Adjustable Seat/Foot Rests First Class Condition</p> <p style="text-align: center;">Price £700</p> <p style="text-align: center;">Tel: Anne Kirby 01524 781 142</p>	<p style="text-align: center;">Truefire Kiln</p> <p style="text-align: center;">Front Loading 2.5 cubic feet 7.5 Kw Internal H24” x W15” x D15” External H52” x W 24’ x D 26” Power Regulator</p> <p style="text-align: center;">Price £350</p> <p style="text-align: center;">Contact Peter Makel Tel: 01253 821 445</p>
--	---

EDUCATIONAL GROUPWORK EXHIBITING OPPORTUNITY

Prior to the Preston Exhibition at the Harris, I was approached by an NPA member, who teaches at the Pottery Studio, which is run by Autism Initiatives. She asked to submit a student groupwork under her membership, after some discussion we ran with this as a pilot. 9 pieces were submitted—3 of which were selected in the usual selection process. Success was achieved through this in a number of ways: The Pottery Studio received good local publicity; group moral was boosted; all 3 pieces sold during the exhibition.

The committee therefore feel that it is appropriate to show one groupwork per exhibition, under the educational remit of the NPA (subject to each galleries' acceptance of this). Groups will be chosen on a first come first served basis and information will be given out in the newsletter along with other exhibition info. It is envisaged that this way of being able to exhibit work with the NPA, will free individuals from the autonomy of groups and give confidence to enable individuals to submit work under their own name.

GUIDE-LINES FOR GROUPWORK

- The group must be an educational group
- The trainer or person submitting the work must be an NPA member
- Each artists name should be clearly labelled on the work, to enable correct labelling for display
- Pieces should show creative input and flair for design/decoration by the artist (i.e. as opposed to slipcast ware, which is based more on industrial technique)
- It is wise to be aware that the work will be displayed together as a group, so when submitting pieces, please ensure that the work co-ordinates visually, as this is considered as part of selection criteria
- The work will be selected in the usual manner of the selection process

NORTH LIGHT GALLERY

This gallery is happy to exhibit one groupwork during the forthcoming exhibition!

Alison Boothroyd

PREVIEW NORTHERN POTTERS AT NORTH LIGHT

All NPA members + guests are invited to attend the preview at the North Light Gallery Huddersfield which will be held on:

SATURDAY 5TH MAY AT 11 AM TO 5PM

As we are hoping that this will be our largest exhibition to date, it would be wonderful to see lots of members support at the preview. The North Light Gallery has just been accepted in the @Art Loan@ scheme, so this would be a good opportunity to buy!

HOW TO GET THERE

- From Huddersfield take A616 signpost 'Holmfirth'
- At 3rd set of traffic lights - turn left - (still A616)
- Approx one and a half miles you will come to 'Armitage Bridge'
- Look for brown signs for 'Yorkshire Technology Park' and 'North Light Gallery'.

**NORTH LIGHT GALLERY YORKSHIRE TECHNOLOGY PARK,
ARMITAGE BRIDGE, HUDDLERFIELD. HD4 7NR**
Tel: 01484 340 003



GUIDE-LINES FOR EXHIBITING WITH NPA

We have had a lot of enquiries regarding the procedure for exhibiting with the NPA, so I thought it may be helpful if I run through key points in this newsletter:

NPA holds 2 exhibitions per year, one of which is usually Christmas-time. Also at NPA festivals (which are bi-annual) there is an unselected exhibition. We endeavour to select prestigious galleries, to promote members work, through high quality exhibitions.

Submission forms are generally sent out with the newsletter in the month prior to the exhibition - although we pre-empt exhibitions via the newsletter to allow time for you to plan your making!

Selection takes place from actual work submitted (as opposed to slides/photo's). Delivery is usually 1-2 weeks prior to selection day (dates and times are provided for each exhibition with submission form). NPA always uses 3 selectors: 1 x Gallery member (usually curator) : 1 x Independent artist : 1 x NPA Member.

It is wise to be aware that the work will be displayed together as a group, so when submitting pieces, please ensure that the work co-ordinates visually, as this is considered as part of selection criteria.

Work should be packed well with plenty of packing material in sealed boxes and that pieces are not protruding from top of boxes. All boxes should be clearly labelled with makers name, membership number and contents of box. Inside the box should be your submission form (all three copies) and your cheque made out to NPA.

When collecting work from exhibitions you should check the work off your copy of the submission form—so that any errors or breakages can be dealt with at the gallery. At the same time ensure that your work is packed to meet your requirements for transport. (we do use experienced packers and take great care with all work—but we are human and occasionally mistakes can occur!)

Some galleries do insure the work once it is on their premises but not all. Members are advised to insure all their own work thereby insuring the work during transportation and the exhibitions!

Both of us do our best for the membership as voluntary committee members and we are grateful for all contributions of work, comments and suggestions towards the exhibitions. Any member wishing to help with exhibitions which are local to them are always appreciated.

Alison Boothroyd

NORTHERN POTTERS AT THE HARRIS

This exhibition was a success for both the gallery and Northern Potters. From 175 pieces selected, 52 were sold. Quite a few members were contacted by other galleries and the Harris have expressed an interest in contacting members for their craft showcases. The exhibition was well received, the gallery expressed that it was "better visited than specific educational programs" by schools.

Thank you to all members who submitted work for this exhibition—keep up the good work!
Alison and Julie

PHOENIX CRAFT WORKSHOP DYSON STREET, HEATON BRADFORD, WEST YORKSHIRE

A Shared Workshop Facility
Fully Equipped for Ceramics
New Members Welcome
Very reasonable rates

Tel: Bob 0113 274 3821
Or Helen 01274 584 557

CERAMICS *in* SOCIETY

www.ceramic-society.co.uk

previously Studio Pottery magazine



UK Potters Association Members: take advantage of our special 2-year rate (8 quarterly issues).

Proof of membership required.

Normal concession is £24 for 1 year subscription.

Contact: Ceramics in Society, 2 Bartholomew Street West,
Exeter EX4 3AJ, UK Phone/fax: 01392 430082
mail@ceramic-society.co.uk

CPA MEMBERS & ASSOCIATES ADVISORY COMMITTEE
MARKETING & PROMOTION DAY

Sat May 12th 2001
10.30 for 11 am

at Peter & Jill Dick

(Fellows of CPA & founder members of the Northern Potters Association)
Coxwold Pottery
Coxwold,
North Yorkshire

morning Brigid Howarth; Arts Consultant who specialises in professional development for makers - will give a slide lecture on marketing and promotion

after lunch Peter & Jill Dick will talk about their long experience of making a living from pottery

Peter Dworok of the Rufford Ceramic Centre will talk about promoting ceramics

Sophie Hamilton will speak of her experiences of selling pots through market stalls and markets

There will be opportunities throughout the day for questions and discussion about pricing, commissioning, practical experience and promotion of ceramics.

There is an excellent tea room opposite the pottery where we can pre-book a light meal or, if preferred, bring a packed lunch. Tea and coffee will be provided.

Price:	CPA members	£12.00
	Non members	£15.00
	Students	£ 6.00

There are places for 5 students and numbers are limited. For booking and directions, please contact:
Isa Denyer 01937 835 632 or e-mail - isapot1@aol.com

CPA MEMBERS & ASSOCIATES ADVISORY COMMITTEE
application for MARKETING AND PROMOTION DAY
Saturday May 12th 2001

Name
Address.....
Post Code..... Phone number

Price: CPA members £12.00 Non members £15.0 Students £6.00 please verify course & college

send a stamped addressed envelope together with your payment to:

Isa Denyer Wighill House Wighill Tadcaster North Yorkshire LS24 8BG Tel: 01937 835 632
for me to return your confirmation of booking and directions.

Please indicate whether you would like a booked lunch

Homemade soup and rolls	£2	Yes-----	No-----
Sandwiches	£2	Yes-----	No-----

THE POTTERS CONNECTION LTD

WHETHER YOU ARE A COMPLETE BEGINNER OR A SEASONED PROFESSIONAL, WE CAN SUPPLY YOU WITH ALL YOUR POTTERY NEEDS AT THE BEST POSSIBLE PRICES, AND IF YOU CAN FIND THE SAME PRODUCTS FOR LESS ELSE WHERE WE WILL DO OUR BEST TO MATCH OR BEAT ANY QUOTED CATALOGUE PRICE.

AS A MEMBER OF THE NORTHERN POTTERS ASSOCIATION, WE WILL GIVE YOU A 5% DISCOUNT* (PRE-VAT) OFF OUR CATALOGUE PRICES.

WHY NOT TELEPHONE OR WRITE TO US AT THE ADDRESS BELOW FOR A COPY OF OUR MAIL ORDER CATALOGUE:

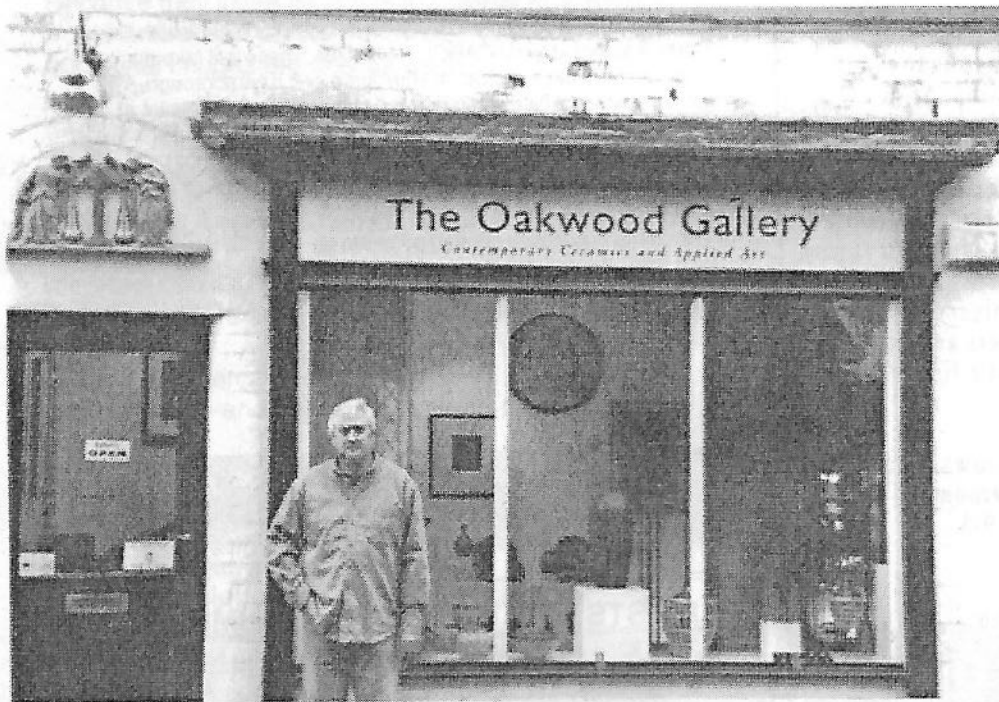
5% OFF!



THE POTTERS CONNECTION LTD
LONGTON MILL, ANCHOR ROAD, LONGTON,
STOKE, ST3 1JW
TEL (01782) 598729 FAX (01782) 593054
ALL MAJOR CREDIT & DEBIT CARDS ACCEPTED.

* 5% DISCOUNT DOES NOT APPLY TO WHEELS, MACHINERY, KILNS OR CARRIAGE CHARGES.

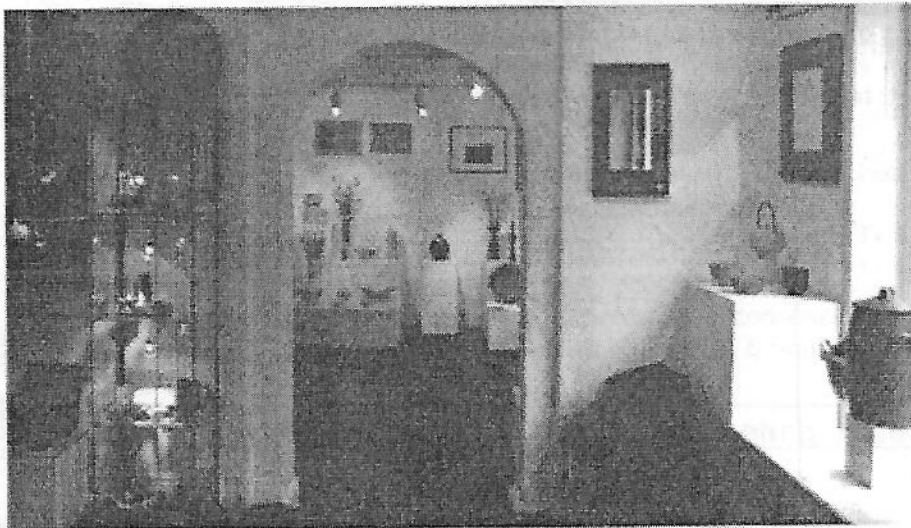
THE OAKWOOD GALLERY AT EDWINSTOWE IN NOTTINGHAMSHIRE



This, it is hoped, will be the first of occasional articles featuring galleries sympathetic towards ceramics.

The Oakwood Gallery at Edwinstowe, at the heart of Sherwood forest, is run by the proprietor David Binch. David's enthusiasm for art was stimulated by a charismatic art teacher whilst at secondary modern school. Later after taking night school classes in astronomy, photography, archaeology, and pottery David met up again with his old art teacher who

recommended that he read Bernard Leach's *A POTTERS BOOK*. "If Michael had lit my fire this book put some serious logs on the flames," said David. Thus began a serious love affair with what David calls Anglo-Oriental ceramics, and he began collecting, and learning about ceramics through his collection.



The gallery exudes David's enthusiasm, besides regular one-person shows one can see work there by Richard Batterham, Chris Carter, Joanna Howells, Chris Keenan, John Leach, Jim Malone, Nick Rees and Phil Rogers. Whenever I go there David has got a new special acquisition to enthuse over, a Cardew bowl for instance or a Bernard Leach piece that he has come across, and which he hands over so that one can get the feel of it. The feel of a piece is as important to David as its' visual

qualities. Whenever he gets the opportunity he loves to throw pots, and strives for the perfect tea-bowl. Sharing a discussion with an enthusiast is always a worthwhile experience. Visiting the Oakwood gallery one can do this and see the objects of that enthusiasm. Whilst unfortunately some of Edwinstowes attractions- the forest walks - are closed presently. The Oakwood Gallery is open every Saturday and Sunday 10.00-5.00. And the pub next door has a good lunch menu!

Brian Holland

**Do you know a gallery
Why not do a write up!!!**

K THE CROMARTIE GROUP *...at the centre of ceramics*

Cromartie Kilns have been leading the way for fifty years with the robust quality and innovation in kiln design that will take you into the new millennium.

Cromartie Hobbycraft is the sole authorised Distributor of Duncan and Gare, the two top US Ranges of brush-on colours and glazes that are now recognised by professional potters for their superb technical quality.

Potter's Wheels and Machinery
Clays, Raw Materials, Tools, Colours and Glazes complete the picture putting Cromartie firmly at the centre of Ceramics

Send for our catalogues or come and browse and talk to our experts in our large showrooms.
Open Monday to Friday 9-5

The Cromartie Group,
Park Hall Road, Longton
Stoke on Trent, ST3 5AY
Tel. 01782 313947
01782 319435
Fax. 01782 599723
www.cromartie.co.uk
enquiries@cromartie.co.uk

KILN FURNITURE SUPPLIES

K.F.S. are a division of Acme Marls Limited

World famous manufacturers of kiln furniture.
We have thousands of pounds worth of
Traditional and modern kiln furniture now in stock.

CIRCULAR AND HEXAGONAL KILN SHELVES
SQUARE AND RECTANGULAR KILN SHELVES
PERFORATED AND RIBBED KILN SHELVES
1000'S OF DOTS, PINS AND FITTINGS
CASTELLATED PROPS
TUBULAR PROPS FROM 0.85" TO 3"
Cut to size if necessary
KILN AND REFACTORY CEMENT
BAT WASHES
PLUS A LIMITED SUPPLY OF SIGHT
SECONDS AND SUBS

We have no minimum order
National delivery service available
We can cut and drill kiln shelves and props to your specifications
Callers Welcome

For generous help and advice contact: Walter Brayford
KFS dept., Acme Marls Ltd., Bournes Bank, Burslem, Stoke. ST6 3DW
Tel: 01782 575 572

Events

EUROPEAN CERAMICS

is now taking bookings for
Paper-Making and Paper-Clay Masterclass Workshops with Craft Council selected artist CAROL FARROW. These will take place between May 8th and 25th at Harrogate and Knarsborough. You will be advised which workshop will suit your particular level of experience. For further details and booking information Tel: Maggie Barnes 01423 867 401.

Study Day at the V&A

Taking the home as a starting point the day takes a look at artists who have recreated & subverted domestic rituals.
10.30 am to 5 pm in the lecture theatre.
Fee £28 with £5 concessions.
For details ring: 020 7942 2209

Opportunities

ARTISTS ARE INVITED TO SUBMIT

WORK for an **Exhibition Celebrating the North York Moors** which is to be held at the Scarborough Art Gallery between 21st July and 28th October 2001. Scarborough Museum and Gallery and the North York Moors National Park have joined forces to stage an exhibition, which captures the spirit and identity of the National Park through a wide and diverse range of media. This wild and remote area includes the largest expanse of open heather moorland in England as well as including some of Yorkshires best loved places including Robin Hoods Bay, Goathland and Rievaulx Abbey. Please send slides of your work with a statement explaining why you chose to depict the area to: Helen Watson, Curator of Art, Scarborough Art Gallery, The Crescent, Scarborough YO11 2PW. Please note that slides or photographs may be used for publicity, postcards and included in a publication of the exhibition. The closing date for entries is 29th May 2001.

World Competition of Arts & Crafts Kanazawa 2001

Open Competition:
Theme "Message of Future Craftmanship".
Juried. Cash Prizes. Deadline 30/4/01.
Details from www.kanazawa.ishikawa.jp/craft

Le Chandelier Ceramique

Theme: Ceramic candle holder.
Open to all. One entry per applicant.
International jury.
Exhibition for selected work, September 22 to November 25. Closing date for applications 1st June 2001.
Prize 10,000 Swiss Francs.
For details and form write to: Muses de Carouge
Mairie de Carouge
Case postale
CH-1227
Carouge
Switzerland.

Websites

www.artmecca.com/

ArtMecca.com is the largest online community and retail center for artists and art lovers around the world. Because they invite all artists to present and sell their work online, they've collected thousands of original pieces from hundreds of artists worldwide. 49 pages of ceramics \$125 lifetime membership includes 18 images, additional images are only \$2 each.

<http://www.artizana.co.uk/>

Artizana is a showcase for contemporary British Arts and Crafts which has been selected for quality by the Crafts Council (or North West Arts) every year since 1985. Artizana covers all major arts and crafts disciplines including studio glass, ceramics, furniture, calligraphy, sculpture, silver, wood, textiles and jewellery.

topdrawer.co.uk

Top Drawer are an arts event organiser.

Onehundredpercentdesign.co.uk

100% Design-another arts event organiser

ukceramics.org

The On-Line Gallery sells art work on the internet

ceramic-sculpture.com

Ceramic Sculpture sells work on the internet

Demonstrations & Residencies

BOLSOVER CASTLE BOLSOVER, DERBYSHIRE.

Brian Holland, ceramics, will be artist in residence at the castle throughout March and April, working on site on Wednesdays, Thursdays and Sundays. He will be making a variety of ceramic work, free standing and wall based, relating to his experience of the castle. During the residency Holland will be running a number of workshops at Bolsover Castle for local school and college communities.

The painter, Bernard Culshaw will be working alongside Brian Holland for one week of the residency, making paintings relating the castle to its' visitors.

Holland and Culshaw will be exhibiting their work at the castle May- September.

Work from the workshops will be exhibited at the castle May-September.



Demonstration by John Calver

at Ruthin Craft Centre, Ruthin,
Sunday 10th June at 10.30 am.

John will be demonstrating his throwing and decorating skills.

Coinciding with this event at the same venue is an exhibition of Katrin Howells work.

Price: Non Members £12 (concessions £8), Members £8 (concessions £5).

To book contact: Diane Cruickshank, North Wales Potters, 6 Stanley Street, Beaumaris, Ynys Mon, LL58 8BD.

Tel: 01248 810661

Brief Report of the Committee Meeting Held on March 10th 2001

Some of the subjects covered are as follows:

Possible exhibition of David Greaves and the people who have worked with him.

Harris Exhibition sales realised £2427

Exhibition at North Light, Huddersfield, large venue needs more plinths and exhibition stands. Pete Clough has offered to make these.

Francis Begany is now in charge of the website and is to update the information on the site.

Festival 2002, Bretton has been booked provisionally for July 12/13/14 th 2002.

The Next meeting of the committee of NPA will be held on 12th May 2001. If there are any matters which members wish to raise please contact the relevant committee member.

Chair
Pete Clough
8 Southville Terrace
Harrogate
Yorkshire HG1 3HH
Tel: 01423 567 716
Email: pet.clough@virginnet.co.uk

Membership
Brian Holland
16 High Street
Whitwell
Worksop
Nottinghamshire S80 4QU
Tel: 01909 724 781
Email: brian-holland@lineone.net

Newsletter Editor
Judith Quinn
9 Greenwood Avenue
Ashton-under-Lyne
Lancashire OL6 8PE
Tel/Fax: 0161 339 5670
Email: judiquinn@talk21.com

Secretary
Sheila Spencer
Wood Edge
Hollin Moor Lane

Thurgoland
Sheffield
South Yorkshire S30 7AX
Tel: 0114 288 5830

Your Committee

Honorary Treasurer
William Johnson
Orchard House
Marston Lane
Moor Monkton
York YO5 8JL
Tel: 01904 738 541
Email: wjohnson@northernpotters.fsnet.co.uk

Exhibition Coordinators
Alison Boothroyd
18 Queen Street
Driffield
East Yorkshire YO25 6QJ
Tel: 01377 257 048

Julie Miles
2 Winnipeg Close
Lannack
Blackburn
Lancashire BB2 7DX
Tel: 01254 699 652
Email: julie-miles@talk21.com

Website
Francis Begany
4 Paul Row
Summit
Littleborough
Lancashire
OL15 9QG
Tel: 01706 378 725

Publicity
Su Hudson
12 High Barn Road
Middleton
Manchester M24 1DT
Tel/Fax: 0161 653 8232
Email: suhudson@planetmail.com

Education
Barbara Heyward
Skirt Bank
Nether Silton
Thirsk
North Yorkshire YO7 2LL
Tel 01609 883 317

General
Caroline Till
21 Hamilton Way
Acomb York
North Yorkshire
YO2 4LE
Tel: 01904 794 171

Advertising in NPA News

Small Adverts: free to members
£10 to Non-members

Boxed Adverts: whole page £100
half page £50
quarter page £25
eighth page £12.50

Repeat Adverts: Six consecutive
inclusions for the
price of four

The opinions expressed in this
newsletter are those of the
contributors and do not
necessarily represent those of the
editor or the
Northern Potters Association.

Only listing may be
reproduced without the
permission of the editor.

J.M. Select

WE ARE MOVING

As from the 26th March 2001 the Johnson Matthey "Select" Team
will be found in our new home at:

Apedale Business Park
Apedale Road
Chesterton
Newcastle-under-Lyme
Staffordshire
ST5 6BH

If you wish to place an order, enquire about our current range of
products and services or obtain further information please contact
us (from the 26th March) on the new numbers shown below.

Orderline	+44 (1782) 576574
Orderline	+44 (1782) 576573
Orderline	+44 (1782) 576576
Sales/Marketing	+44 (1782) 576571
Technical enquiries	+44 (1782) 576568
General fax	+44 (1782) 576560

We thank you in advance for your continued support and look
forward to servicing your requirements in the future.